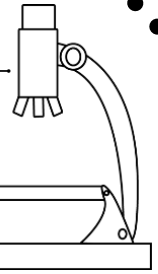


Name: _____

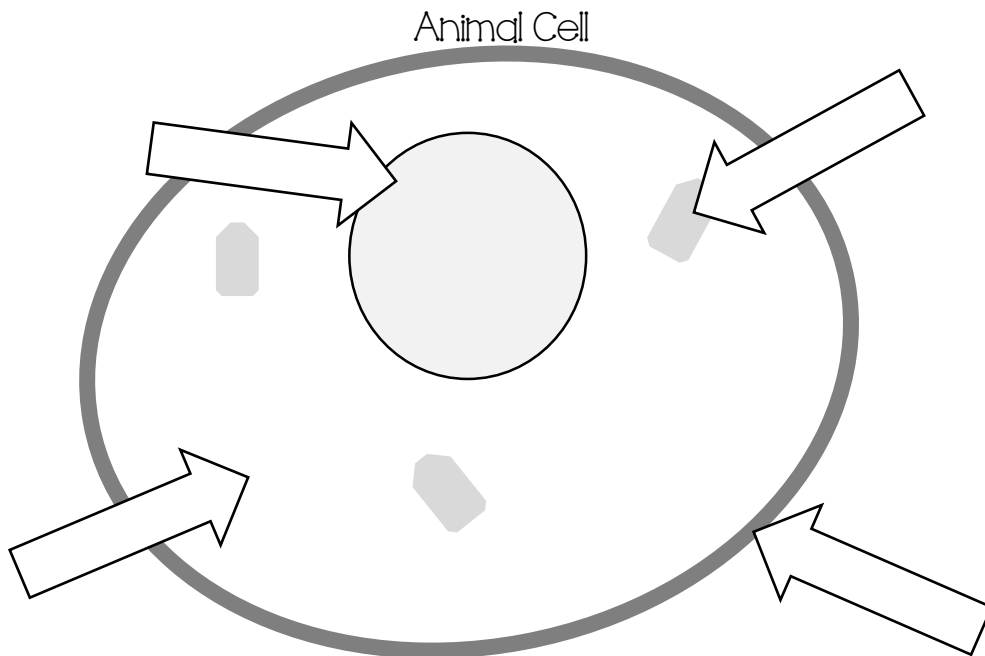
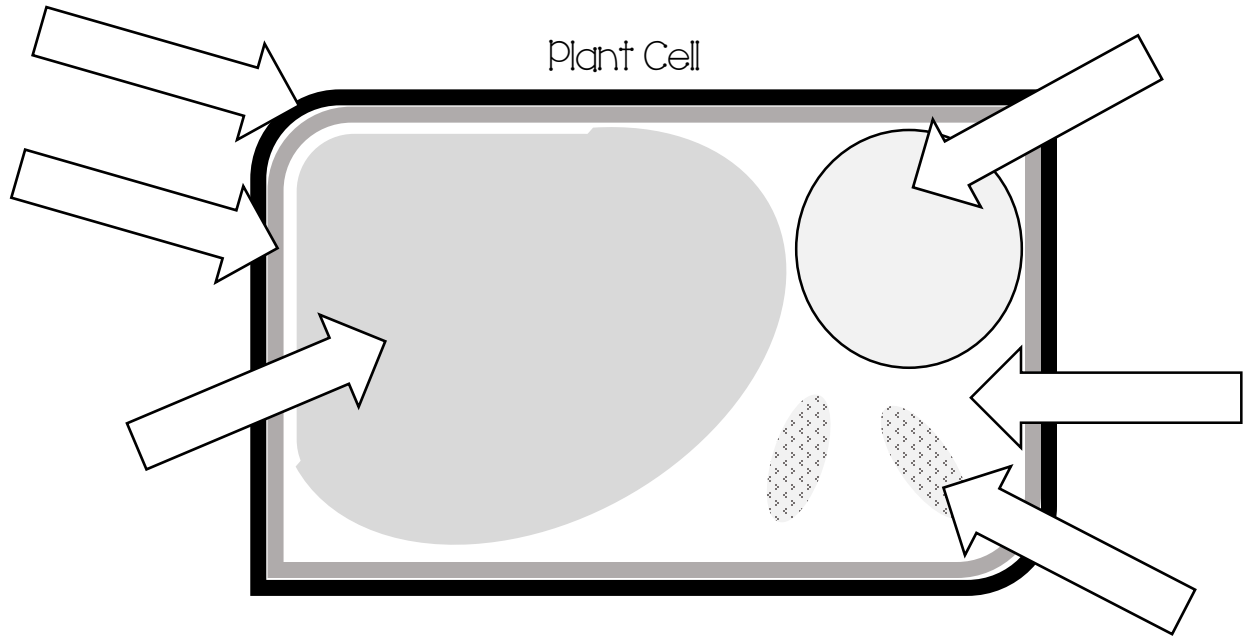
Date: _____



Plant and Animal Cells Study Guide

Directions:

Label the structures in each cell. (cell wall, cell membrane, nucleus, vacuole, cytoplasm, chloroplasts)



What is the usual shape of plant cells? _____

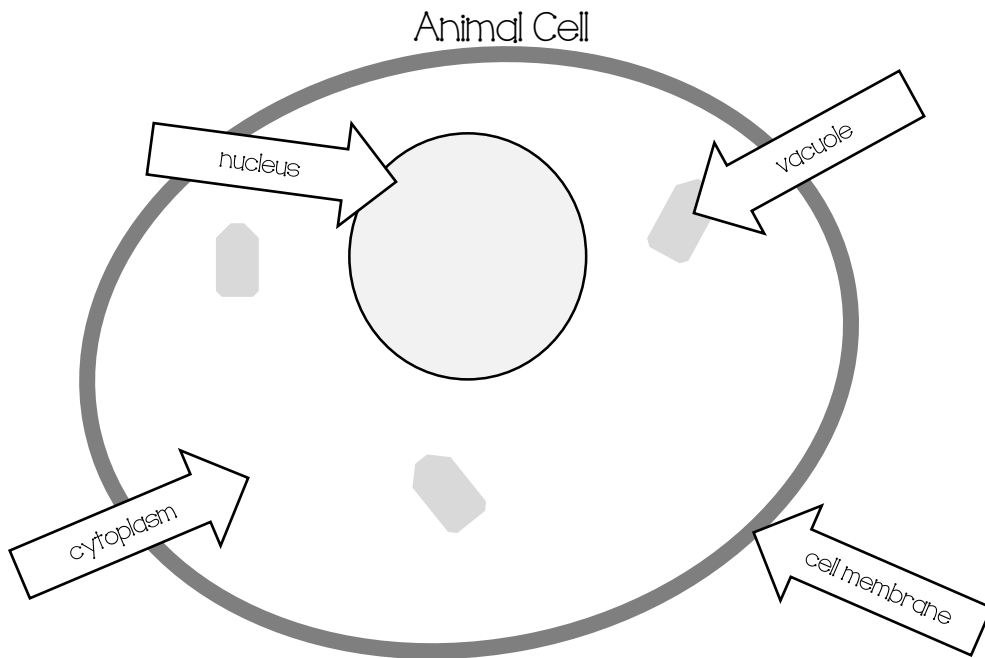
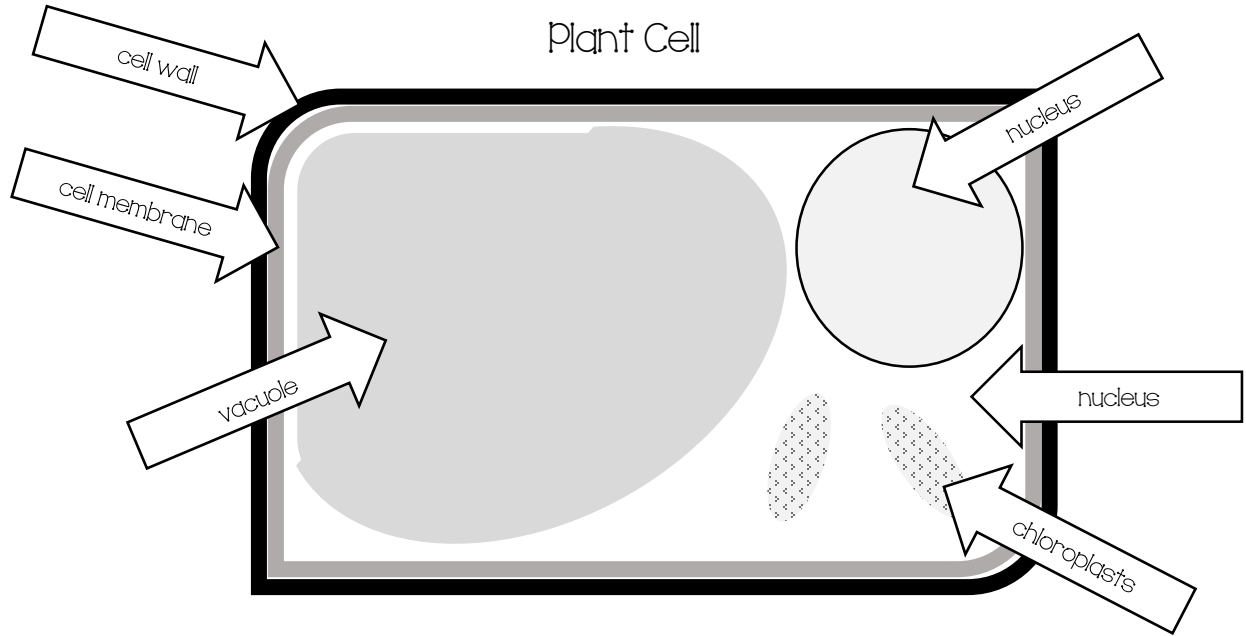
What is the usual shape of animal cells? _____

Directions:

Match the vocabulary word to the correct definition.

- | | |
|------------------|--|
| 1. cells | a. where photosynthesis occurs in plant cells |
| 2. microscope | b. controls cells, where DNA is stored |
| 3. cell wall | c. all living things are made of these |
| 4. cell membrane | d. stores materials and waste |
| 5. nucleus | e. tool used to magnify objects |
| 6. vacuole | f. fluid inside of cells |
| 7. chloroplasts | g. thick, rigid membrane surrounding plant cells |
| 8. cytoplasm | h. surrounds all cells |

Study Guide Answer Key



What is the usual shape of plant cells? rectangular

What is the usual shape of animal cells? spherical or irregular

1. cells: c (all living things are made of these)
2. microscope: e (tool used to magnify objects)
3. cell wall: g (thick, rigid membrane surrounding plant cells)
4. cell membrane: h (surrounds all cells)
5. nucleus: b (controls cells, where DNA is stored)
6. vacuole: d (stores material and waste)
7. chloroplasts: a (where photosynthesis occurs in plant cells)
8. cytoplasm: f (fluid inside cells)